



## Battery Preparation & Shipping Guide

Preparing batteries for recycling is important for both storage and shipping as it will help reduce any risk of batteries short circuiting. Proper preparation creates a safer work environment and will prevent incurring additional costs.

Lithium, lithium ion and sealed lead acid batteries may only be shipped in accordance with Canadian Environmental Protection Act and the Ministry of Environment 347/588 and in accordance with the Transportation of Dangerous Goods Act. If you have any questions or concerns regarding battery preparation please contact RMC.

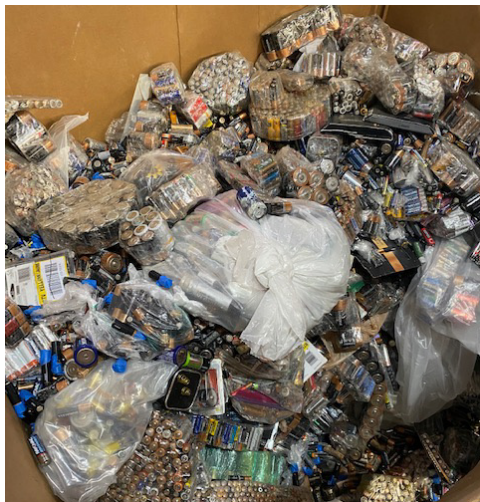
### Excessive Taping

Some batteries require tape to prevent short circuiting. Please only tape the following batteries: lithium, lithium ion, lead acid, 6 volt, 9 volt button cell batteries and other rechargeable batteries with exposed terminals or wires

Please use clear tape and ensure the battery chemistry is still identifiable. Only exposed terminals or leads need to be covered, please avoid excessive taping or wrapping batteries. This increases required handling and costs.

### Excessive Bagging/Packaging

Please remove bulk alkaline batteries from original packaging and plastic bags.



### Shipping Containers

Please inspect shipping containers to ensure they are safe for transport. Ensure drums are secured to pallet with shrink wrapped. Please do not use any broken pallets, damaged drums or containers. Cubic Yard boxes (Gaylords/Waste Wranglers/Supersacks) are not a preferred shipping container;

as many are not designed to handle the weight of the batteries safely. Please contact RMC prior to shipment of these to ensure the load will be received (additional fees may apply).

## Contamination

It's important to monitor and inspect battery collections and remove any debris or contamination prior to shipping batteries. Anything that is not a battery is considered contamination, including the following: water, sand, excessive vermiculite, oil, dirt, needles and garbage.



## Storage

Please ensure you store your battery recycling containers in a cool dry area. Drums and pallets should be stored in an accessible area for drivers and their equipment. If containers are stored outside, ensure drums and/or pallets are located on a hard surface and protected from rain, snow and ice.

## Ontario Program Collections

Under the Ontario Battery Regulation 30/20 beginning July 1, 2020 all single use and rechargeable Ontario generated batteries weighing less than 5kgs are program eligible and recycling costs are covered by the Battery Manufacturers with the exception of embedded batteries. Standard recycling fees will apply to all batteries weighing over 5kgs, embedded in electronics or generated outside Ontario

Questions or concerns please contact us:

**Raw Materials Company Inc**  
**17 Invertose Drive**  
**Port Colborne, ON**  
**L3K 5V5**  
**905-835-1203 – 1-888-937-3382**  
[sales@rawmaterials.com](mailto:sales@rawmaterials.com)  
[www.rawmaterials.com](http://www.rawmaterials.com)